



14th Annual Art Auction

14th Annual Art Auction Exhibition



Paris Gibson Square
MUSEUM OF ART

Exhibition Dates: January 13 - February 2, 2011
Artist's Reception: 5:30 - 7:30pm January 13, 2011

14th Annual Art Auction & Benefit Dinner

February 5, 2011—Meadow Lark Country Club

Cocktails/No-host bar: 5:30-7:00pm

Buffet Dinner: 7:00-8:30pm

Silent Auction: 5:30-10:15pm

Live Auction: 8:15-10:00pm

Art is For Everyone Sponsor



Event Sponsors:



All images © 2011, the exhibiting artists, all rights reserved. On-line catalog © 2011, Paris Gibson Square, Inc. All rights reserved. Catalog designed by Bob Durden, Curator of Art, Paris Gibson Square Museum of Art.



Museum programming is made possible by the generosity of museum members and supporters, with ongoing assistance from the Montana Arts Council a state agency funded by the State of Montana and the National Endowment for the Arts, and the Citizens of Cascade County.

14th Annual Art Auction

We are delighted to present this preview of work included in The Square's upcoming *14th Annual Art Auction and Benefit Dinner* to be held on Saturday, February 5, 2011 at the Meadow Lark Country Club. The event continues to evolve as one of the museum's liveliest fund-raisers and proceeds support exhibition and educational programs at The Square throughout the year.

The preview exhibition is an opportunity for us to share a representative sampling of the inclusive world of contemporary art. This array of art reflects the optimistic spirit, introspective nature and cultural diversity prevalent in Montana and the region. The art of our time continues to pose serious questions that give us pause, honor the beauty of our natural surroundings, decipher the mysterious and perhaps most importantly, remind us that we are all connected to one another through our humanity. Examples of each of these ideas can be found in this omnibus exhibition.

This exhibition and the upcoming *14th Annual Art Auction and Benefit Dinner* would not be possible without the cooperation and support of the participating artists, who each have given of themselves to support the goals of the museum and provide area art lovers with an opportunity to enhance established or build new collections. Without the artists' enthusiastic support at this time and throughout the year, the Paris Gibson Square Museum of Art could not serve the public with the exhibitions and programs that enrich the cultural life in north central Montana.

Special Thanks Go to All of the Participating Artists:

Jean Albus, Martin Andrews, Sharie Babb, Dana Berardinis, Frances Carlson, *Rudolf Dietrich, Monte Dolack, Bill Drum, Lisa Easton, Thomas English, Mollie Erkenbrack, Kevin Eveland, Kay Feist, *Jacque Finnicum, *Deborah Ford, *Ruth Franklin, *Halley Gallagher, *Stephen Glueckert, Maryellen Gutacker, Alana Hastings, Sally Hickman, Carol Hoffnagle, Betsey Hurd, Lisa Jarrett, Bill Jaynes, Neil Jussila, Peter Keefer, Mary Ann Kelly, Nona Jane Kendall, Sylvia (Bunny) Lara, Shelle Lindholm, Cathryn Mallory, Brian Maly, Alan McNeil, Sheila Miles, Cate Moses, Dale Marie Muller, Davi Nelson, *Neltje, Michael Patterson, David C. Powers, *Timothy Seery, Carlyle S. Smith, Kate Spencer, *Julie A. Stevenson, *Terry Thall, Echo Ukrainetz, Ron Ukrainetz, Shalene Valenzuela, Jane Waggoner Deschner, Jeff Walker, Shirle Wempner, Brenda Wolf, Monte Yellow Bird.

** Indicates artists who have made complete donations.*

We invite you to witness, examine, question and enjoy the exhibited art work, and to further your participation in the visual dialogue by either attending the *14th Annual Art Auction and Benefit Dinner* or by leaving an absentee bid with the front desk staff. We also encourage you to thank and support the talented visual artists in the area who add to the cultural value within our community throughout the year.

Finally, we thank our members, patrons, sponsors and volunteers for their continued support throughout the year.

Live Auction Selections



Catalog #L1

Retail Value: \$1,450

Pacific Northwest Getaway

July 9-July 16, 2011

Full Donation by Carol Mungas

Destination:

Sandcastle at Birch Bay, WA



Explore the Pacific Northwest while staying at a richly decorated one bedroom condominium featuring 1,000 square feet of free-flowing living space that includes: 2 bathrooms, king bed and comfortable sofa sleeper, full-service kitchen with granite countertops, Fireplace, flat screen TVs and built in DVD player, washer and dryer and an outdoor balcony with bay or golf course views.

Your stay at Sandcastle at Birch Bay will be a retreat from the multitude of activities in the Northwest with Vancouver, British Columbia a one hour drive away and a two hour drive to Seattle, Washington. Bellingham International Airport is a 30 minute drive away and is served by Allegiant Air (*air fare not included*).

With beaches, clamming, golf, tennis, 4 acres of water slides, spas, and dining at your door, and the San Juan Islands, Mt. Baker, Bellis Fair Mall, Burlington Prime outlets, and whale watching a short distance away, you can enjoy a vacation at the edge of the wild, where the spirit of the Pacific Northwest lifts your mood to take you to places unfounded.

Check-in: Saturday, July 9th

Departure: Saturday, July 16th

Area highlights:

July 12th-16th-Blaine Jazz Festival

July 16th-Arts and Crafts Fair and Grand Parade

July 17-18, 2011-Tall Ships-Battle Sail*

*Three-hour Battle Sails feature booming cannons, close-quarters maneuvers and a taste of 18th century maritime life aboard all ships.





Rudolf Dietrich
Bozeman, MT
Full Donation by the Artist

Catalog #L2
Amaryllis 3
2010, Digital Pigment Print, 20 x 16"
Estimate: \$150-\$200

"My personal work in photography deals with the intimate surroundings of my home, my family and what goes on in my mind. Another anchor in my work and life is the family ranch in Dixon."—Rudolph Dietrich

Rudolf "Rudi" Dietrich was born and raised in Austria. Living near Vienna as a ten year old during WWII, he often lived through bomb raids three times a day. Studies at the Realgymnasium in Salzburg, a humanities oriented school followed after the war. He furthered his studies at the School for Applied Arts in Innsbruck, passing both guild and state exams in photography for Master Photographer (then similar to the Bar exam for lawyers) and was teaching and working as a photographer in Salzburg. Rudi came to Montana in 1964 and taught at Montana State University in Bozeman from 1970 to 1998. His work was featured in a solo exhibition, *Echoes*, at The Square in 2008.



Brian Maly
Helena, MT

Catalog #L3
Windowbox
2007, Acrylic on Canvas Board, 20 x 16"
Estimate: \$450-\$600

"The primary focus of my work is on creating unique landscapes and nature treatments. My intent is to master color and composition so that my work becomes extraordinarily attractive."—Brian Maly

Brian Maly is primarily a self-taught artist who has exhibited in numerous juried exhibitions. He has lived in Helena for the last 21 years.



Michael Patterson

Great Falls, MT

www.wmpatterson.com

Catalog #L4

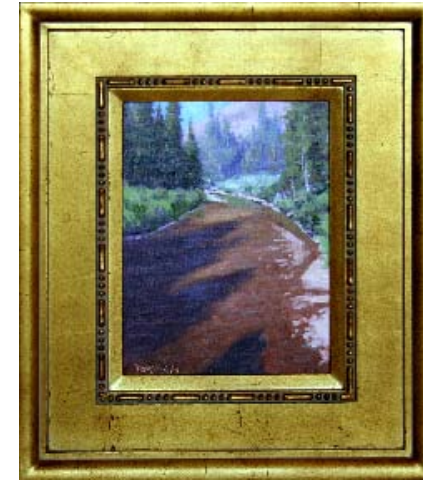
Lost Creek Falls

2009, Oil on Canvas, 24 X 18"

Estimate: \$1,750-\$2,000

"My focus is on the beauty I see in Montana. I find inspiration in this place and I try to express the sense of wonder it gives me. At the same time, I am humbled by the ineptitude of my efforts, but buoyed by the pleasure I feel in being able to even make the attempt. I am a happy man! I expect this connection to Montana and its beauty to intertwine in the rest of my personal, professional and artistic lives. Painting gives me the opportunity to touch the reality of the place I love and to produce some work that may help others feel what I felt when I looked upon a part of Montana."—Michael Patterson

A native of Hot Springs, Arizona, Michael Patterson moved to Great Falls in 2001. Michael possesses a Bachelor of Arts degree in Sociology and a Masters degree in Public Administration. He was drafted into the U.S. Army in August 1966 and remained on active duty until his retirement in 1993. After which, he began painting as a self-taught artist and is a member of the Montana Painters Alliance.



Thomas English

Great Falls, MT

Catalog #L5

Swift Current Shadows

2010, Oil on Canvas Board, 12 X 9"

Estimate: \$700-850

"I am continually inspired by the endless variety and beauty of nature's bounty. I feel a great appreciation for the opportunities that living and working in Montana have provided."—Thomas English

Thomas English has participated in many shows throughout Montana and the United States. He has had solo exhibitions at the Hockaday Museum of Art in Kalispell, Montana; Paris Gibson Square Museum of Art in Great Falls, Montana; a group show at the C.M. Russell Museum in Great Falls, Montana; and numerous art galleries. One of his paintings of Glacier National Park was purchased by the Hockaday Museum of Art in Kalispell, Montana for inclusion in its permanent collection. His work has been displayed at the Governor's Mansion in Helena, Montana, and he was awarded an Artist in Residency in Glacier National Park. He is a founding member and was the first President of the Montana Painters Alliance.



Sylvia (Bunny) Lara
Great Falls, MT

Catalog #L6
Electrified Bulls
2010, Digital Photograph, 18 x 22"
Estimate: \$800-950

"I am self taught and experiential learning has been my trainer, however, while being a housewife and raising three children I took art classes at Northern Virginia College, and the University of Alaska, Southeast. Those classes included commercial drawing, pencil drawing and photography."

This is Bunny Lara's first year participating in the Art Auction.



Bill Drum
Billings, MT

Catalog #L7
Mustangs
www.montanadrum.com Welded and Salvaged Steel, 45.5 x 35"
Estimate: \$3,500-\$3,750

"I collect my raw materials – my palette of colors - at Montana salvage yards where heavy equipment of enormous size pick up, crush, and put into huge piles old cars, farm machinery, oil drums, kitchen appliances, and various industrial detritus no longer useful in today's world. These hill size mounds of scrap and salvage are a rich bonanza of artistic raw material for me, and provide me with colors and textures not achievable with new materials.

I strive to make pieces that are unique, have unity, good color, interesting juxtaposition, animal dignity, and whatever meaning and mystery the baggage and imagined history the old and cast off metals might imbue them with."—Bill Drum

Bill Drum was born and raised in Miles City, Montana. He attended Cornell University, the University of Montana, and the American Graduate School for International Management. He has lived and worked in Sao Paulo, Mexico City, New York and California. Bill and his wife, Carol Drum, live in Billings, Montana. Bill's work was featured in The Square's exhibition *Free Rein: Bill Drum and Carol Spielman*.



Ron Ukrainetz

Great Falls, MT
www.ronukrainetz.com

Catalog #L8

The Stretch
2008, Oil on Linen Board, 12 X 18"
Estimate: \$1,500-\$1,750

"Plein air painting is a sincere and true form of expression. Gathering just enough 'scenic information' on a surface to convey one moment in time should say more about the artist than the subject."—Ron Ukrainetz

Born and raised in Great Falls, Montana, Ron Ukrainetz is a life-long artist. During the past 25 plus years, working as a professional artist, he has garnered awards from numerous shows across the country. He has been featured in magazines such as *Wildlife Art News*, *The Artists Magazine*, *InformArt*, and *U.S. Art*. Ron works in acrylics on engraved Claybord® in the studio and in oil, both in the studio and en plein air. In 2006 and 2007, he was selected as one of 72 *Best of America* from the National Oil and Acrylics Painters Society. In May of 2007, Ron's work was selected for inclusion in the Society of Master Impressionists in Taos, New Mexico. In 2008, one of Ron's paintings placed in the Top 100 of the Paint America Competition. In July of 2009, two of Ron's paintings placed in the Top 100 Paint the Parks Competition. He is a member of Oil Painters of America and a founding member and past president of Montana Painter's Alliance.



Monte Dolack

Missoula, MT
www.dolack.com

Catalog #L9

McDonald Lake Evening
2010, Acrylic on Panel, 12 X 12"
Estimate: \$2,300-\$2,500

A native of Great Falls, Monte Dolack grew up surrounded by the same sweeping vistas and big sky that inspired Charlie Russell. After studying art at Montana State University and The University of Montana, Monte opened his first studio in 1974, beginning a successful career in fine art and graphics.

Monte has been the recipient of a number of prestigious awards in the course of his career and his work is part of the collection of the Library of Congress, the American Association of Museums, the National Wildfire Foundation and numerous other museums and corporations. Recent exhibitions include *The Montana Exhibition*, Manawatu Art Museum, New Zealand; *Artists of the American West*, Bank of Ireland Arts Centre, Dublin, Ireland; and The Kumamoto Prefectural Art Museum, Kumamoto, Japan. Monte's work was chosen to be included in *The North American Print Biennial*, Boston, Massachusetts and *New American Paintings*, a Western States competition sponsored by the Open Studio Press. He was selected at the turn of the century by the *Missoulian* as one of the 100 most influential Montanans of the twentieth century.



Bill Jaynes

Big Fork, MT

www.montanahi-line.net

Catalog #L10

Missouri River Island

2006, Archival K3 Inkjet Print, 16 X 32"

Estimate: \$500-\$600

"I explore the landscape in Montana and find it to be a generous expressive palette of themes from history, geology, climate and what have you. Light and color seemingly beg the artist to look harder and closer at all that is this place we love"—Bill Jaynes

Bill Jaynes studied photography under Stephen Lehmer at Flathead Valley Community College, 1978-79. He went on to teach the art photography program there from 1982-1994. He has had numerous photography exhibits and is represented by Art Fusion gallery in Bigfork, Montana. Bill has resided in Bigfork, Montana since 1976.



David C. Powers

Great Falls, MT

www.davidc.powers.com

Catalog #L11

Evening

2007, Gouache on Paper, 12 X 24"

Estimate: \$1,000-\$1,250

"The setting sun is the subject. I seek not to capture the facts but a moment of splendor."—David C. Powers

David C. Powers came to Great Falls in 1995 as the Artist-in-Residence in Schools. He earned a Bachelor of Fine Arts degree at Columbus College of Art and Design, Columbus, Ohio, and a Master of Fine Arts degree at Maryland Institute College of Art, Baltimore, Maryland. He has exhibited at the San Diego Art Institute, California; Missoula Art Museum, Montana; and Columbus Museum of Art, Ohio. David's work was featured in The Square's *David C. Powers: Bathed in Light*, August 13 - October 24, 2009.



Martin Andrews
Great Falls, MT

Catalog #L12
Sea
2010, Stained Glass, 17.5 X 27.5"
Estimate: \$600-\$725

"Putting stained glass in our environment changes the light that moves through it and is reflected in a new way. Beautifying our space to create a better place is one of my goals when creating stained glass art.

I was born in the Bronx, New York City and raised in Middletown, New Jersey. I came to Great Falls in 1975 with the United States Air Force. The only formal art training I received was in high school where I loved to do big wall murals and sculptures. After serving in the Air Force, I became part owner of Penthouse Salon for 30 years, doing hair and makeup art. I did a little art here and there and in 1991, a good friend, Marie Jo Murray taught me to do stained glass. I fell in love with creating custom windows and mosaics while playing with clay on the side. Working in the studio provides great release from every day stress; time flies and I think of nothing else. I see art everyday and everywhere in life, what a great feeling to explore, enjoy and share."—Martin Andrews

Martin's stained glass windows grace the front entry and west stairwell at The Square as part of the museum's permanent collection.



Ruth Franklin
Great Falls, MT

Catalog #L13
Japanese Lanterns in a Roseville Vase
2010, Oil on Panel, 28 X 28"
Estimate: \$500-\$700

Ruth Franklin's still life paintings reveal strong color and an alla prima approach which captures her immediate reaction to the subject. For many years, the pear has been an inspiration because of its sensual shape and variety of line and color. Objects included in her paintings often convey a personal story.

Ruth Franklin is a long-time devoted museum patron, volunteer and docent. Her work is exhibited locally at Gallery 16.



Carol Hoffnagle

Missoula, MT
www.studio12art.com

Catalog #L14

Longwood Gardens
2008, Colored Pencil, 22 X 30"
Estimate: \$1,800-\$2,250

Carol Hoffnagle earned her Bachelor of Fine Arts Degree in Print making from the College of New Rochelle, New York. She has exhibited in California, Illinois, Massachusetts, Montana, New Jersey and Texas. Her work is in collections such as the California Federal Savings and Loan, Los Angeles and Orange, California; Carney Lansford, Oakland, California; and Marriot Hotel, San Antonio, Texas.



Full Donation by Riddle's Jewelry

Great Falls, MT

Catalog #L15

Ladies Necklace and Bracelet
Retail Value: \$1,500

This elegant jewelry ensemble was crafted especially for The Square by the fine goldsmiths at Riddle's Jewelry in Great Falls. The necklace is crafted with two-tone yellow and white silver, sporting forty-eight links of various sizes, shapes, and finishes in a free-flowing style inspired in part by the work of John Buck. The center piece can be worn separately as a brooch. The bracelet is crafted with two-tone yellow and white sterling silver and bronze. It is 8" long featuring 16 links and a toggle and bar clasp.

The eventual owner of this bracelet may visit Riddles' Jewelry in Great Falls for a personal appraisal.



Alan McNiel

Troy, MT

www.alanmcniel.com

2010, Oil on Canvas over Panel, 30 X 40"

Estimate: \$1,800-\$2,250

Catalog #L16

Water Dogs

"What could be more fun than painting dogs balancing milk bones on their noses?"

Interest in art has always been a key aspect of my life. I enjoy a wide variety of creative styles, but find my own work most influenced by modern artists such as Andy Warhol, Robert Rauschenberg and Pablo Picasso. "—Alan McNiel

Alan McNiel earned a Bachelor of Fine Arts degree from Colorado State University, in 1978, and a Master of Arts degree from the University of Montana, in 1987. He worked as a potter for a number of years, making wood-fired vessels covered with bas-relief carving. In 1995, he began painting full-time.



Dale Marie Muller

Red Lodge, MT

www.dalemariemuller.com

Catalog #L17

Bright Winter: Coyote

2010, Graphite, 12 X 14"

Estimate: \$1,600-\$1,800

"I've always been fascinated by the freedom, the mystery, the depth of self motivation of the artist. The ability to be in tune with nature, to be true to one's self and listen to the inner creative voice inspired me at an early age and has fueled my artwork ever since. In recent years, I have created a body of work, both oil paintings and graphite drawings, resonating with my deep respect for all wildlife."—Dale Marie Muller

Dale Marie Muller was born in New York and grew up in New Jersey. She studied at The University of the Arts in Philadelphia, Pennsylvania, where she earned a Bachelor of Fine Arts degree. In 1996, she moved to Montana. She is known primarily for her oil paintings and graphite drawings depicting wildlife.



Frances Carlson
Great Falls, MT

Catalog #L18
Monday Chases Sunday
2008, Pastel, 22.25 X 30"
Estimate: \$1,000-\$1,250

"At times I am in love with line, at others with mass, but always with story. For me, looking at a work of art is like peeking in a lighted window at dusk. A tale can be found in every gesture."—Frances Carlson

Frances Carlson earned a Bachelor of Science degree. For many years, she was an occupational therapist working with children experiencing neurological problems. After taking a year sabbatical from her job, she rediscovered her love of art and has been working as a visual artist ever since.



Davi Nelson
Ryegate, MT

Catalog #L19
Road to the Gap
2010, Oil on Paper, 20 x 30"
Estimate: \$1,000-\$1,250

"My work is a reflection of the landscape I live in. It is not a portrait of a specific place, but rather an attempt to evoke a sense of place and a way of life in a rural environment."—Davi Nelson

Davi Nelson's work has been exhibited internationally in such diverse venues as Ireland, *The American West, a 21st Century Retrospective*; and China, *Out West, The Great American Landscape*. Past museum exhibitions include *The Evocative Landscape* at the Holter Museum, Helena, Montana; *Contemporary Montana Artists* at the Museum of the Rockies, Bozeman, Montana; *Masters in Miniature* at the C. M. Russell Museum, Great Falls, Montana; and *Postcards of the Wild West* at the Nicolaysen Museum, Casper, Wyoming. Her work may also be seen July 1 to October 1, 2010 in *Montana Landscape: The Eye of the Beholder* at the Holter Museum in Helena, Montana. The Square featured her work in a solo exhibition, *Vistas*, in 2010.



Art is for Everyone!



Art is for Everyone
Sponsored by:



Catalog #L20

At Paris Gibson Square Museum of Art, art truly is for everyone! Research demonstrates that students who participate in art education are more successful academically and socially. Participating in art has also proven to be physically and mentally therapeutic. Whether you love viewing art, creating art or find it to be a healing process, The Square would like to invite you to share these enriching, life changing opportunities with others. Your contribution is generously matched by Wells Fargo to ensure art enhancement and cultural awareness at Paris Gibson Square Museum of Art for children, teens, and adults - regardless of ability.

Where is your gift implemented?

- Free After School Art Classes, K-12
- Free Art Classes for developmentally disabled children and adults—Vision, Strength and Access (VSA program)
- Free Senior Art Classes
- Instructor Fees
- Art Supplies
- Educational Tours
- VSA exhibition



Timothy Seery

Great Falls, MT

Full Donation by the Artist

Catalog #L21

The Stranger

2010, Acrylic on Canvas, 10 x 8"

Estimate: \$350-\$500

“What does exile look like? For millennia, artists have offered their visual interpretations of this very question. Is exile perhaps a deviation from the path of societal expectations? The nature of exile and the relationship between faith and doubt is the very question presented at the heart of Albert Camus's 1942 novel, *The Stranger*. Is the woman in this painting suffering from exile, or is she deriving from it a sense of absurd strength? That question is for you to answer.”—Timothy Seery

Timothy Seery was born and raised in Great Falls, Montana and is a senior at Charles M. Russell High School. He has been fascinated by visual expression since his earliest days as a student at The Square's Preschool Open Studio. Primarily self taught, Tim enjoys painting in oils and acrylics at his 4th floor Columbus Center studio and participating in benefit auctions for Neighborhood Housing, the Animal Foundation and Paris Gibson Square Museum of Art. This year will be Tim's eighth year participating in The Square's benefit art auction.



Halley Gallagher
Great Falls, MT

Catalog #L22
Winter Tree
2010, Acrylic on Canvas, 36 x 18"
Estimate: \$300-\$450

"Within our society, we can embrace all things and when we act we should take into account their holistic effect. This is to realize that we are all one. One web and one life—we are connected to each other.

I have been exploring the concept of Dinergy as expressed in Gyorgy Doczi's book *The Power of Limits*. Dinergy means opposing energy; a universal process, creating pattern through opposites. The form of this pattern is dependent on the intersection of the opposing forces, how they share space. Dinergy is mathematically based on the Fibonacci sequence, a series of numbers in which each number is the sum of the two previous ones: 1, 2, 3, 5, 8, 13, 21, 34..."—Halley Gallagher

Halley Gallagher grew up in Great Falls, Montana, graduating from C.M. Russell High School, in 2004, before she attended Creighton University where she earned her Bachelor of Fine Arts degree in Studio Painting. She returned to Great Falls and served as Artist in Residence for the Spring Semester, in 2010, and was featured in a solo exhibition, *The Forest*, at The Square in 2010.



Sheila Miles
Santa Fe, NM
www.artistmiles.com

Catalog #L23
Arroyo Trees
2009, Oil on Canvas, 36 X 30"
Estimate: \$850-\$1,000

"My work is a recording of my life experience that includes current news events, relationships, folk tales, animals, weather, landscape, the psychological, emotional, visual and intellectual world. My work can be serious, whimsical, real or imagined. These ideas are manifest in serious or whimsical moods in portraits, narratives and the iconic, ironic or dream-like imagery."—Sheila Miles

Sheila Miles earned a Bachelor of Arts degree, a Master of Arts degree in Painting and a Master of Arts degree in Drawing from Purdue University, Indiana. She is a full-time artist who works as an artist in schools and museums. She has exhibited throughout the region and is the recipient of numerous awards including the Gottlieb Foundation Fellowship for painting and the Montana Arts Council Individual Fellowship Award. She is included in numerous private collections and public collections such as the Yellowstone Art Museum, Billings, Montana; Federal Reserve Bank, Minneapolis, Minnesota; and the Missoula Art Museum, Montana.



Deborah Ford

Prescott, AZ

Full Donation by the Artist

Catalog #L24

Missouri River 1, 2010, Archival pigment print from silver gelatin, 10.25 x 10.25"

Estimate: \$500-\$650

"The western landscape has been a powerful source of physical, economic, spiritual, political and personal exploration throughout history. Individuals have come west and formed connections to the land, many of which are of a contradictory or contested nature for political gain, profit or personal inspiration. From these pursuits, complex stories are born, personal and public, literary and visual, and live on to form our collective understanding of 'the west'. Cultural attitudes and identity are reflected in the cartography and place names, personal albums and public imagery that are housed in our museums and private collections."—Deborah Ford

Deborah Ford studied photography at the Minneapolis College of Art & Design and Arizona State University. She earned a Bachelor of Fine Arts degree in Photography and a Masters degree in Photography/Art Education. She has taught photography full-time since 1982, the last ten years at Prescott College in northern Arizona where she resides with her family. She has received numerous awards and fellowships and was recently featured at The Square in *Deborah Ford: Cartography and the Cultural Terrain*.



Monte Yellow Bird, Sr.

Great Falls, MT

Catalog #L25, *The Birth of Red Hawk*

2010, Colored Pencil on Formula Ledger, Fargo, North Dakota, Circa 1928, 12 x 8"

Estimate: \$800-\$1,000

*"The ledger in this work is a collective of natural and chemical formulas or remedies for a variety of ailments. The author was somewhat of an alchemist in constructing this collection of remedies. The composition of *The Birth of Red Hawk* pays tribute to one of the many winged creatures that carry our hopes and prayers to 'The Chief That Sits Above.'"*—Monte Yellow Bird, Sr.

Monte Yellow Bird, Sr. (also known in the art world as Black Pinto Horse) grew up in White Shield, North Dakota. His love of color, the faith he learned from his mother and images from his American Indian/First Nation heritage are all influences in his artwork. Monte is a past Artist-in-Residence at The Square. He attended North Dakota State University majoring in history education with art as a minor, and graduated in 2002 from Minot State University with a Bachelor of Fine Arts degree in Art.



Neltje

Banner, WY
www.neltje.com

Full Donation by the Artist

Catalog #L26

On the Floor of Darkness, 2009, Mixed Media and Collage, 22 X 30"

Estimate: \$1,000-\$1,250

"I trust in the unconscious. I strive to make the sensed visible, to balance the interior reality of passion with the eternal condition of form."—Neltje

Neltje studied art at the Art Students League, New York, New York, and the New York Studio School of Drawing, Painting and Sculpture, New York, New York. She has exhibited her work extensively since 1984, including exhibitions at the Yellowstone Art Museum, Billings, Montana; Nicolaysen Art Museum, Casper, Wyoming; Bradford Brinton Memorial, Big Horn, Wyoming; and the Eiteljorg Museum, Indianapolis, Illinois. Museum patrons will remember her painting exhibition *Neltje: Wide Open*.



Cathryn Mallory

Missoula, MT
www.cathrynmallory.com

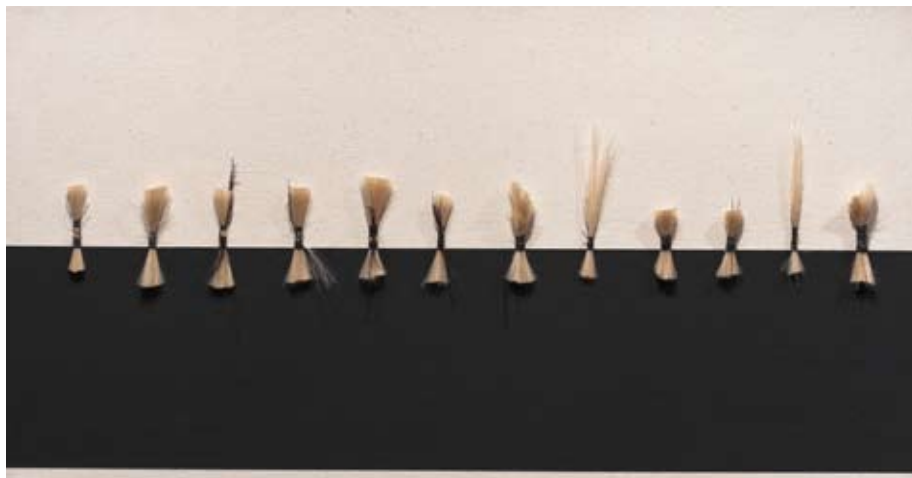
Catalog #L27

Tropical Bend, 2009, Vintage Linoleum on Wood Panel, 26 X 18 X 2"

Estimate: \$700-\$850

"Obsessive process and passion for materials have always been significant elements in my work. Laborious fiber techniques such as stitching, wrapping, plaiting and weaving allow the work to slowly evolve, creating an intimate and meaningful relationship. The intuitive aspect of repeated motion brings something into being that is elegant and at once transcendent."—Cathryn Mallory

Cathryn Mallory is currently a Professor and Director of the Gallery of Visual Arts for the School of Art at The University of Montana, Missoula. Originally from the Chicago area, she received her Bachelor of Fine Arts degree in Fiber Arts from Northern Illinois University in DeKalb, and a Master of Fine Arts degree in Sculpture from the University of Oklahoma in Norman. Cathryn was Curator of Art at Paris Gibson Square Museum of Art and a past Artist-in-Residence for the Great Falls Public Schools. Her work has been exhibited in numerous exhibitions on a regional and national level and is featured in numerous private and public collections. Museum patrons will remember her exhibition *Trace Identity* that took place at The Square in 2007.



Lisa Jarrett

Missoula, MT
www.lisajarrett.com

Catalog #L28

Cornrows, 2010, Human Hair, Thread and Acrylic on Canvas, 16 X 30"

Estimate: \$950-\$1,100

"As a minority citizen of the western world, my personal interpretations of life often differ from what I have been taught to believe. Expressing these interpretations visually serves as an important vehicle for personal discovery."—Lisa Jarrett

Lisa Jarrett was born in 1977 in Morristown, New Jersey. Growing up as a Black American who moved to various, often conflicting political climates in Texas, Minnesota, and New York. Though comparisons of *self* and *other* are not limited to the American Black Experience, Jarrett's work is typically centered upon deconstructing, defragmenting and, in turn, reconstructing and reassembling her personal experiences into a visual expression that asks viewers to consider their own roles in present-day race relations.

Lisa Jarrett received her Associate of Applied Science degree in Graphic Design and a Bachelor of Fine Arts degree in Art in 1999 from Rochester Institute of Technology, Rochester, New York, and a Master of Fine Arts degree in Art from the University of Montana, Missoula, in 2009.



Lisa Easton

Great Falls, MT

Catalog #L29

Untitled, 2011, Salvaged Fir, Slate and Steel, 20 X 60 x 12"

Estimate: \$1,200-\$1,500

"My interest in human connectivity and relationships informs my work in functional design. This has resulted in the creation of various kinds of seating in materials such as concrete, mild and stainless steel, aluminum, stone and salvaged wood. These become visual, physical metaphors that invite experiences of personal contact between two people. Metal, especially mild steel, is a favored vehicle in much of my artistic production."—Lisa Easton

A Great Falls native, Lisa Easton earned her Bachelor of Arts degree in Art at Montana State University, Bozeman in 1995. She has taught art in the Great Falls Public Schools since 1999 and continues as a working studio artist. Her work is sited on the museum grounds to the south of the building. Lisa works in steel, encaustic and salvaged materials, often applying techniques and skills acquired from working alongside her father in the building trades. Her work is influenced by the Byzantine art of the Greek Orthodox Church of her childhood as well as the prairie and mountain landscapes of the northern plains. Lisa Easton's work was featured in *Lisa Easton: Field/Work* at The Square, in 2009.



Betsey Hurd

Kalispell, MT

www.betseyhurd.com

Catalog #L30

Hannah

Acrylic on Cast Bronze, 10.25 x 14.5 x 5"

Estimate: \$1,200-\$1,500

"The strength of my work comes from depicting what I know best—horses, livestock and the natural world. I'm more into the feel and essence of things than the little details, though composition and correct conformation are always important."—Betsey Hurd

Betsey Hurd received her Bachelor of Fine Arts degree, cum laude, from the University of Montana, Missoula in 1984, with concentrations in ceramics and drawing. A working artist since 1990, she is currently represented at ArtFusion, Bigfork, Montana; Holter Museum, Helena, Montana; Tierra Montana, Las Cruces, New Mexico; Scottsdale Fine Art, Arizona; A Horse of a Different Color, Jackson Hole, Wyoming; and Jest Gallery, Whitefish, Montana. Her work is exhibited in numerous shows and housed in permanent collections across the country, including The White House, Washington, DC; The Hockaday Museum, Kalispell, Montana; and the Nicolaysen Museum, Casper, Wyoming.

In 2010, The Square featured Betsey's paintings and bronzes in *Betsey Hurd: Natural Gaze*.



Brenda Wolf

Great Falls, MT

www.brendawolf.com

Catalog #L31

Polaroid

2009, Pastel, 16 X 22"

Estimate: \$800-\$1,000

"All the animals I paint represent some part of my emotional self, usually one that I am not fully aware of at the time. How these subconscious details find their way into my paintings is extremely intriguing to me. Each animal speaks to me visually, coming to me in random dreams or thoughts, which I then translate into sketches then finally a painting. Each animal/painting is a direct link to my subconscious and in turn allows me to have a visual dialog with the viewer. Whether the viewer grasps the deeper meaning behind the paintings or simply enjoys the paintings as a thing of beauty, I am all too happy to bring both to the surface."—Brenda Wolf

Originally from New York City, Brenda Wolf came to Montana in 1998. She attended Syracuse University for painting and earned a Bachelor of Fine Arts degree from the School of Visual Arts in New York City, New York. She has taught painting at The Square; Art History and Graphic Design at the University of Great Falls; and Drawing and Graphic Design at the College of Technology in Great Falls. For 7 years, she was an art director at a Great Falls advertising agency, winning numerous awards both nationally and internationally for her graphic designs.



Stephen Glueckert

Missoula, MT

Full Donation by the Artist

Catalog #L32

Boomerang, 2010, Cattle Marker and Graphite, 40 x 26"

Estimate: \$500-\$650

Stephen Glueckert is a sculptor and mixed media artist living in Missoula, Montana. He earned a Bachelor of Arts degree in Art from The University of Idaho and a Master of Arts degree in Art Education from Western Washington University. His work has been exhibited widely throughout Montana and the Northwest region. His work was included in the traveling exhibition *Speaking Volumes: Transforming Hate*. Stephen serves as an officer on the Museum and Art Gallery Directors Association of Montana board and he is the current Curator of Exhibitions at The Missoula Art Museum, Missoula, Montana. He is a member of the Montana Artists Caravan and the SALTMINE group. The Square will organize and present a solo exhibition of Stephen's work in the coming fall.



Cate Moses

Santa Fe, NM

www.catemoses.com

Catalog #L33

The River Is Moving, The Raven Must Be Flying 2009, Oil and Conte' Crayon on Canvas, 36 X 48"

Estimate: \$4,000-\$5,000

"My work is concerned with our conflicted relationship with nature. I work from a strong sense of place. My paintings do not depict specific places; rather, they are composite maps of my experiences in high alpine wild places of the West. The colors and compositions in my work come from the landforms and life forms I encounter in the back country.

Content dictates media and technique in my work. I am not limited by a single approach. I work with seasonal color palettes and materials found in nature. I gather charcoal from lightning-charred trees, organic matter and human detritus from the forest floor and sand from the arroyo near my studio. Recently, my nine year old daughter made brushes for me by pounding the yucca leaves in our yard with a rock. These have revolutionized my painting process (thanks, Isabella!)."—Cate Moses

Cate Moses earned a Bachelor of Arts degree in English Literature and Creative Writing from the University of New Mexico, Albuquerque; a Master of Arts degree in English and a Doctorate degree in Contemporary American and African American Literature from Pennsylvania State University.



Shalene Valenzuela

Missoula, MT
www.shalene.com

Catalog #L34

Ironing Things Out: Thermos
2008, Ceramic, 8 X 5 X 5"

Estimate: \$300-\$450

"My body of ceramic work consists of quirky pieces that reflect upon a variety of issues with a thoughtful, yet humorous and ironic tone. I am inspired by the potential of everyday common objects. I reproduce these objects primarily through slip casting, and illustrate the surfaces with a variety of hand painted and screen printed imagery. My narratives explore topics ranging from fairy tales, urban mythologies, consumer culture, societal expectations, etiquette and coming-of-age issues."—Shalene Valenzuela

Shalene Valenzuela was born and grew up in Santa Barbara, California. She received a Bachelor of Arts degree in Art Practice at the University of California at Berkeley, and a Master of Fine Arts degree in Ceramics from California College of Arts and Crafts. In June 2007, she moved from her longtime home of Oakland, California to begin a two year residency at The Clay Studio of Missoula. She spent the 2009/10 academic year teaching at Oregon College of Arts and Crafts and recently returned to Missoula. Shalene has participated in numerous artist residencies in Montana and California and has shown her work nationally in numerous exhibitions.



Jean Albus

Bridger, MT
www.jeanalbus.com

Catalog #L35

Standstill
2010, Archival Inkjet Print, 19 X 13"

Estimate: \$450-\$600

"It's exciting to watch my ideas evolve. I've learned to say 'yes' to them, see where they'll take me, be part of the adventure and then share it."—Jean Albus

Jean Albus currently resides near Bridger, Montana. She is a native Montanan who lived fifteen years in and around Seattle, Washington, before moving back to Red Lodge, Montana in 1988.

Her recent work uses dresses in the landscape as a surrogate for self. She uses photographic imagery against a backdrop of the landscape where she lives. Not simply photographs of dresses or the landscape, the resulting images have many layers of meaning relating to her own history, the history of the land, her connection to it and the human conditions of joy, transition and mortality.

Jean Albus' photographs will be featured in a solo exhibition, *Rapture on the Plains*, at The Square February 17 – June 4, 2011

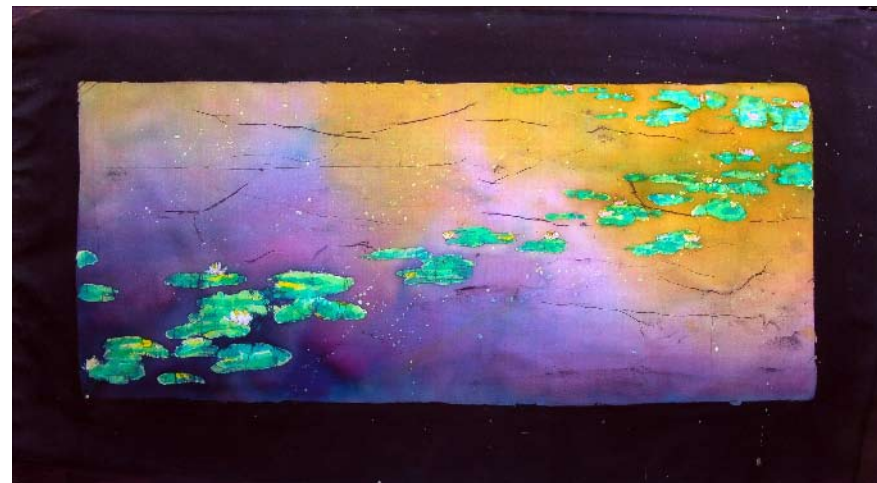


Mary Ann Kelly
Bozeman, MT

Catalog #L36
Lessons from the Smith River: Reading the Lines
2004, Pastel on Paper, 30 x 22"
Estimate: \$1,000-\$1,250

"Reflecting upon the elements of our sensual experiences in moments of awareness or reflecting in the memory of ones' collective imagination presents an assemblage of significant signs that form a visual language. This language appears to me as a combination of gesture, movement, color and form that when read together recall the significance of experience, the importance of observation and the power of memory."—Mary Ann Kelly

Mary Ann Kelly earned a Bachelor of Science degree in Art Education at the State University College of New York, Buffalo, and moved to Bozeman, Montana, to study at Montana State University where she earned a Master of Fine Arts degree in Painting. She has received two National Endowment for the Arts awards and a Montana Arts Council Individual Artist Fellowship award. She has exhibited in Camberwell College of Art, the London Institute, United Kingdom; the University of the West of England, Bristol, United Kingdom; Studio 7 Gallery, Honolulu, Hawaii; Gallery Paule Anglim, San Francisco, California; Florida State University, Tallahassee, Florida; Boise Municipal Art Museum, Boise, Idaho; University of Utah, Salt Lake City, Utah; and many Montana museums.



Echo Ukrainetz
Great Falls, MT

Catalog #L37
Water Lilies
2009, Batik, 16.5 X 34"
Estimate: \$1,100-\$1,400

"With each new piece comes anticipation, excitement, and above all, education. All artists are perpetual students"—Echo Ukrainetz

Echo Ukrainetz is a Montana native who has taught Art, History and Spanish in the Great Falls area for many years. She has been working with batik for 16 years and enjoys experimenting with the many different aspects of the medium. Her batiks include a large variety of subject matter and are housed in numerous collections across North America.



Jeff Walker
Fort Shaw, MT

Catalog #L38
Autumn
2010, Oil on canvas, 20 X 28"
Estimate: \$3,200-\$3,800

"All of my subjects come from within 100 miles of Great Falls. I have enough right here to keep me going for the rest of my life."—Jeff Walker

Born and raised in Great Falls, Montana, Jeff Walker spent his youth observing, inspecting and recording Montana's stretch of bird life, ridges and prairies. He graduated from Great Falls High School, received a degree from Montana State University in Bozeman and engaged in graduate work at Eastern Montana College, Billings, Montana, after a stint in the Army. He taught secondary level art at Great Falls High; but soon after, he left teaching to pursue a full-time career in painting. Inspired by the watercolor prints of Audubon, the media of etching and watercolor soon became united under Walker's touch in small edition etching prints, pulled by hand, then water-colored individually. This gradually gave way to an interest in oil painting. Jeff Walker is a naturalist at heart and in spirit. The Montana landscape endures as his principal inspiration.



Peter Keefer
Missoula, MT
www.studio12art.com 2009, Altered Digital Photography, 12 X 36"
Catalog #L39
Poughkeepsie RR Bridge
Estimate: \$900-\$1,100

"Using my digital photographs, I manipulate them in Photoshop to investigate the deconstruction and relocation of certain selected areas, adding more layers of transparent color and moving them around until I am satisfied with the results.

Changing the face of reality, reducing or restructuring that 'camera perceived' model through the use of computer based spatial decisions is a directional aspect of photography that I have been pursuing for a few years. I think overcoming the challenges presented by the use of the computer is the basic innovation present in my digital work."—Peter Keefer

Peter Keefer earned his Bachelor of Fine Arts Degree in Art from the California College of Arts & Crafts in Oakland, California, and a Master of Arts degree in Print making from California State University, Northridge, California. He has exhibited in Arizona, California, Montana, New Mexico, New York, London and Seoul. His work is in numerous collections such as: American Express Company, Santiago, Chile; Bank of America, San Francisco, California; CBS, Los Angeles, California; and IBM Corporation, New York, New York.



Neil Jussila
Billings, MT

Catalog #L40
May
2010, Oil Glazes on Canvas, 17 X 14"
Estimate: \$900-\$1,100

Butte, Montana, a lively, catawampus, mining city is the place of my birth and upbringing. I studied art at Montana State University in Bozeman, and am a Vietnam war veteran. Fortunately, the privilege of teaching and its income made it possible for me to follow a contemplative path, in this immense place. Zen.

Change creates beauty, in an expansive flow, wherein one painting leads to another. As with the changes of seasons, upon a vast plain, are cycles of life. A thought is born to live out its days, and, then pass in a cycle of change, wherein beauty comes forth anew. Nothing is permanent and there is no style in the accepted rhythms of nature."—Neil Jussila

Neil Jussila's work will be featured at The Square in February in *Neil Jussila: Joseph in Montana—The Nez Perce Epic*.



Dana Berardinis
Big Fork, MT
www.danaberardinis.com

Catalog #L41
Allerdale
2005, Oil on Canvas, 12 x 12"
Estimate: \$350-\$500

"The work comes from my absorption into the landscape. It speaks of movements and rhythms, moods of weather, stillness and isolation. A deep never-ending space holds atmospheric clouds that gently make their way across the sky while layers of textures roll across the horizon. The movements that occur create a rhythm that flows like water. The rhythms are like music only silent.

I find spontaneity and freedom in the power of nature, which inspires me in the creation of my work. I experience painting the way I do the landscape. It holds the same quietness, the same search. As I paint, memories rush through me. Most of the time, I am searching for answers I can only come so close to understanding. I find something indescribable in nature that is never made completely clear in the form of language, which creates in me a need to paint."—Dana Berardinis

Dana Berardinis received her Bachelor of Fine Arts degree in Painting from the Cleveland Institute of Art. She was featured in a solo exhibition, *Dana Berardinis: True Remains*, at The Square February 18 – May 15, 2010.

SILENT AUCTION SELECTIONS



Jean Albus
Bridger, MT
www.jeanalbus.com

Catalog #S1 **Estimate: \$325-\$400**
My Traveling Shoes
2010
Archival Inkjet Print
11 x 7"

"It's exciting to watch my ideas evolve. I've learned to say 'yes' to them, see where they'll take me, be part of the adventure and then share it."—Jean Albus

Jean Albus currently resides near Bridger, Montana. She is a native Montanan who lived fifteen years in and around Seattle, Washington, before moving back to Red Lodge, Montana in 1988.

Her recent work uses dresses in the landscape as a surrogate for self. She uses photographic imagery against a backdrop of the landscape where she lives. Not simply photographs of dresses or the landscape, the resulting images have many layers of meaning relating to her own history, the history of the land, her connection to it and the human conditions of joy, transition and mortality.

In February, Jean Albus' photographs will be featured in a solo exhibition at The Square.



Sharie Babb
Great Falls, MT

Catalog #S2 **Estimate: \$200-\$300**
The Whole Town
2000
Acrylic on Paper
13 x 16"

"My art is created as a request for illumination or answers, yet at other times as a reaction to the barrages of being alive. The trials, failures and successes imposed on any living thing result in the patina of age that I enjoy creating in my work.

I seek nothing more than the interpretation of the inspiration that began the process and to delve into the enjoyment of communicating via my art. We all leave an impression on life just as it leaves a patina on us, therefore lets us continue on this journey of illuminating the language of art."—Sharie Babb

Sharie Babb grew up in Townsend, Montana, and resides in Great Falls. She earned a Bachelor of Science degree in Fine Art from the University of Great Falls and has been making art ever since.



Dana Berardinis
Big Fork, MT
www.danaberardinis.com

Catalog #S3 **Estimate: \$150-\$200**
Hidden Swamplands
2009
Intaglio Print
12 X 8.5"

"I find spontaneity and freedom in the power of nature, which inspires me in the creation of my work. I experience painting the way I do the landscape. It holds the same quietness, the same search. As I paint, memories rush through me. Most of the time, I am searching for answers I can only come so close to understanding. I find something indescribable in nature that is never made completely clear in the form of language, which creates in me a need to paint."—Dana Berardinis

Dana Berardinis received her Bachelor of Fine Arts degree in Painting from the Cleveland Institute of Art. She was featured in a solo exhibition, *Dana Berardinis: True Remains*, at The Square February 18 – May 15, 2010.



Frances Carlson
Great Falls, MT

Catalog #S4 **Estimate: \$600-\$750**
Bull Mountain
2010
Charcoal on Paper
12 X 21"

"At times I am in love with line, at others with mass, but always with story. For me, looking at a work of art is like peeking in a lighted window at dusk. A tale can be found in every gesture."—Frances Carlson

Frances Carlson earned a Bachelor of Science degree. For many years, she was an occupational therapist working with children experiencing neurological problems. After taking a year sabbatical from her job, she rediscovered her love of art and has been working as a visual artist ever since.



Bill Drum
Billings, MT
www.montanadrum.com

Catalog #S5 **Estimate: \$900-\$1,100**
Huntington
2010
Welded and Salvaged Steel
16.5 x 23"

"I strive to make pieces that are unique, have unity, good color, interesting juxtaposition, animal dignity, and whatever meaning and mystery the baggage and imagined history the old and cast off metals might imbue them with."—Bill Drum

Bill Drum was born and raised in Miles City, Montana. He attended Cornell University, the University of Montana, and the American Graduate School for International Management. He has lived and worked in Sao Paulo, Mexico City, New York and California. Bill and his wife, Carol Drum, live in Billings, Montana.

Bill's work was featured in The Square's exhibition *Free Rein: Bill Drum and Carol Spielman*.



Mollie Erkenbrack
Fletcher, OK
www.mollieerkenbrack.com

Catalog #S6 **Estimate: \$500-\$600**
Spanish Shawl III
2010
Oil on Linen
14 X 11"

"I use oil for most of my paintings. It is a challenging medium that I dream of mastering someday. A lot of heart goes into my paintings and if my work can reach someone on an emotional level, I feel I've been successful. Selling the work I love to do is icing on the cake."—Mollie Erkenbrack

Mollie Erkenbrack studied fine arts at West Texas State University in Canyon, Texas, and graphic arts at Oklahoma State Technological School in Okmulgee, Oklahoma. Mollie's interests were mainly in graphic arts at the time and she painted only sporadically through the years of marriage and raising her daughter. She began a graphic arts career in the late seventies and spent over 25 years as an illustrator and design artist in Oklahoma. Mollie has been a member of several art organizations and has served as Vice President of the Norman Art League in Norman, Oklahoma.



Kevin Eveland
Great Falls, MT
www.eveldesigns.com

Catalog #S7 **Estimate: \$300-\$450**
Chief Joseph Pass
2009
Photo Printed on Aluminum Sheet Metal
16 x 24"

Kevin Eveland shoots mainly high dynamic range photos. By combining several different exposed images, he is able to capture a very wide tonal range.

Kevin Eveland earned a Bachelor of Fine Arts degree in Graphic Design from Montana State University, Bozeman. He is an Art Director for a local advertising firm and an award winning designer with over 10 years of graphic design experience.



Kay Feist
Great Falls, MT

Catalog #S8 **Estimate: \$150-\$200**
Platter with Colored
Carved Design
2010
Stoneware
2 x 14" in diameter

"I work primarily in reduction-fired stoneware. My passion is using a technique of applying liquid colored clay to damp clay and carving designs throughout to create strong visual contrasts. Some of these vessels are given geometric shapes to create symmetrical and orderly designs. Others are more freely decorated with black, green and gold forms to give a feeling of earth and nature. Making pottery is a complex enterprise, which is continually challenging, exciting and ultimately fulfilling."—Kay Feist



Jacque Finnicum

Great Falls, MT
www.jacquefinnicumpottery.com

Catalog #S9 Estimate: \$75-\$100

Blue Mottled Vase
2010

Ceramic, 8 x 8 x 8"

Full Donation of the Artist

"Clay is my passion. For the last 7 years I have been devoted to turning raw lumps of clay into usable pieces of functional kitchen and house wares. As a full-time studio potter, exploring the craft of pottery has taken my life in new and exciting directions that I never would have imagined. I love each step of the process equally, making each piece is a labor of love and commitment, first as a lump of raw clay, then the form emerges to reveal the function, the glaze finishes the piece and at last it's a finished product ready to be used. There are challenges along the way. Choices to be made and the trial of fire in the kiln is the true test of character for each pot. I love that each day is an opportunity to make a better pot, learn something new and experience the value of being creative.

It is my hope that you will experience the joy of living with pottery, whether cupping a mug in your hands or enjoying a bowl of ice cream, I encourage you to fully appreciate each piece by using it."—Jacque Finnicum



Ruth Franklin

Great Falls, MT

Catalog #S10 Estimate: \$200-\$300

Green Pear with Two Shells
2008, Oil on Board, 16 X 16"

Full Donation of the Artist

Ruth Franklin's still life paintings reveal strong colors and an alla prima approach which captures her immediate reaction to the subject. For many years, the pear has been an inspiration because of its sensual shape and variety of line and color. Objects included in her paintings often convey a personal story.

Ruth Franklin is a long-time devoted museum patron, volunteer and docent. Her work is exhibited locally at Gallery 16.



Halley Gallagher

Great Falls, MT

Catalog #S11 Estimate: \$100-\$150

Butterfly
2010
Acrylic on Canvas, 8 X 10"

Full Donation of the Artist

"I have been exploring the concept of Dinergy as expressed in Gyorgy Doczi's book *The Power of Limits*. Dinergy means opposing energy; a universal process, creating pattern through opposites. The form of this pattern is dependent on the intersection of the opposing forces, how they share space. Dinergy is mathematically based on the Fibonacci sequence, a series of numbers in which each number is the sum of the two previous ones: 1, 2, 3, 5, 8, 13, 21, 34..."—Halley Gallagher

Halley Gallagher grew up in Great Falls, Montana, graduating from C.M. Russell High School, in 2004, before she attended Creighton University where she earned her Bachelor of Fine Arts degree in Studio Painting. She returned to Great Falls and served as Artist in Residence for the Spring Semester, in 2010, and was featured in a solo exhibition, *The Forest*, at The Square in 2010.



Maryellen Gutacker

Great Falls, MT

Catalog #S12 Estimate: \$200-\$300

Polar Bear
2010
Oil
14 X 11"

"I am an artist who devotes her life to the portrayal and teaching of light, color and movement. I work in pastel, oil and mixed media. My subject matter includes wild life, nature, figure and still life."—Maryellen Gutacker

Maryellen Gutacker earned her Master's degree in Education from Nazareth College, Rochester, New York, in 1996. She taught art in public schools from 1991- 2004.

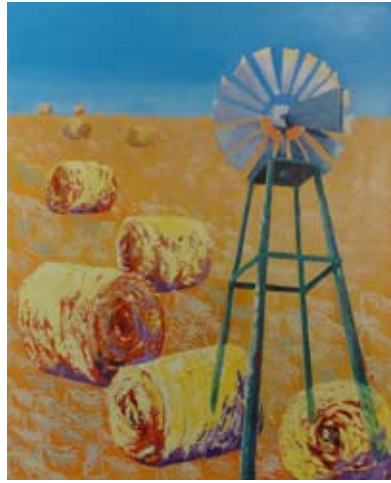


Alana Hastings
Great Falls, MT
www.alanahastings.com

Catalog #S13 Estimate: \$300-\$400
*Flowers Among
the Leaves*
2010
Acrylic and Oil, 24 x 18"

"The one message I want to convey is nature of any sort, a flower or landscape, is essentially abstract. When I am plein air painting, the surroundings fill me with energy that comes forth out of the brush onto the canvas.

Painting has been a good part of my life for 33 years, and I have always drawn and painted what I see. When I see a mountain and paint it, I want you to feel that mountain as something grander than anything words might express."—Alana Hastings



Sally Hickman
Missoula, MT

Catalog #S14 Estimate: \$100-\$200
Reaching for the Wind
2003
Acrylic on Canvas
30 x 24"

"Montana's geography nurtures creativity. The spirit of the land indelibly imprints itself and there's no escape for the native artist who must respond to the intensity of Montana's landscape with an artist's tools, and somehow express this exuberant vitality in a creative work. Such land spurs inspiration and evokes expression.

As I travel, I find a commonality in the rich gifts of the earth. Colors, shapes and textures of landscape and farms, crops and grasslands create abstract patterns and illusionary visions. Time spent creating images of this subject matter with a variety of media is a grounding and restorative endeavor."—Sally Hickman

Sally Hickman earned her Bachelor of Science degree in Elementary Education, a Master of Arts degree in Children's Literature and Administration credentials from the University of Montana, Missoula, in 1979, 1985 and 1989, respectively. After retiring from her position as Elementary School Principal at Stevensville Public Schools, Stevensville, Montana in 2002, Sally returned to the University of Montana where she continues her fine arts studies.



Betsey Hurd
Kalispell, MT
www.betseyhurd.com

Catalog #S15 Estimate: \$300-\$400
Bluet
2009
Oil on Canvas
8 x 10"

"The strength of my work comes from depicting what I know best—horses, livestock and the natural world. I'm more into the feel and essence of things than the little details, though composition and correct conformation are always important."—Betsey Hurd

Betsey Hurd received her Bachelor of Fine Arts degree, cum laude, from the University of Montana, Missoula in 1984, with concentrations in ceramics and drawing. A working artist since 1990, she is currently represented at ArtFusion, Bigfork, Montana; Holter Museum, Helena, Montana; Tierra Montana, Las Cruces, New Mexico; Scottsdale Fine Art, Arizona; A Horse of a Different Color, Jackson Hole, Wyoming; and Jest Gallery, Whitefish, Montana. Her work is exhibited in numerous shows and housed in permanent collections across the country, including The White House, Washington, DC; The Hockaday Museum, Kalispell, Montana; and the Nicolaysen Museum, Casper, Wyoming.

In 2010, The Square featured Betsey's paintings and bronzes in *Betsey Hurd: Natural Gaze*.



Nona Jane Kendall
Great Falls, MT

Catalog #S16 Estimate: \$400-\$500
Reserved in Umbria
2010
Acrylic on Canvas
24 x 16"

"Travel, whether regionally or abroad, is a passion of mine and I have combined it with my love of painting. A trip to the hill towns in Italy inspired this painting. I loved the reserved chairs on this cobble street, the strong shadows and the contrast of the window to the chairs."—Nona Jane Kendall

Nona Jane Kendall earned her Bachelor of Fine Arts degree in Art Education from Oklahoma University, in 1967. She taught Art at the High School level for 4 years in Glenview, Illinois before moving to Great Falls, where she taught 6th grade art from 1994 through 2006. Nona Jane has been an active volunteer at The Square over the years where she has taught a variety of art classes, served two board terms and continues to serve as a docent.



Shelle Lindholm

Kalispell, MT

www.shellelindholm.com

Catalog #S17

Estimate: \$350-\$425

Primitive Pelican

2007

Acrylic on Panel

6 X 6"

"My primitive painting style has developed through years of exploring the versatile medium of acrylics. I usually have an idea in mind and a list of colors gleaned from the local surroundings. The acrylics are layered. Wax is sandwiched in between. Excavation of the layers is done by scraping and sanding. Colors merge. Shapes appear. Rock like textures surface. Compositions are honed through various techniques such as masking, taping or etching into wet paint. A satiny patina of hand rubbed paste wax creates a durable finish to the piece.

My paintings reflect the rugged elegance of the West and express the enchanting pleasures of living here."—Shelle Lindholm

Shelle Lindholm earned a Bachelor of Fine Arts degree from Stephens College in Columbia, Missouri, in 1973. Her work is represented by Art Fusion in Bigfork, Montana; Latigo and Lace in Augusta, Montana; Kindred Spirits in Kalispell, Montana; and Tierra Montana in Las Cruces, New Mexico.



Brian Maly

Helena, MT

Catalog #S18

Estimate: \$400-\$500

The Beach

2009

Acrylic on Canvas Board

20 X 16"

"The primary focus of my work is on creating unique landscapes and nature treatments. My intent is to master color and composition so that my work becomes extraordinarily attractive."—Brian Maly

Brian Maly is primarily a self-taught artist who has exhibited in numerous juried exhibitions. He has lived in Helena for the last 21 years.



Alan McNeil

Troy, MT

www.alanmcniel.com

Catalog #S19

Estimate: \$550-\$625

Blue Milk-Bone

2010

Oil on Canvas Over Panel

18 X 21.5"

"What could be more fun than painting dogs balancing milk bones on their noses?"

Interest in art has always been a key aspect of my life. I enjoy a wide variety of creative styles, but find my own work most influenced by modern artists such as Andy Warhol, Robert Rauschenberg and Pablo Picasso."—Alan McNeil

Alan McNeil earned a Bachelor of Fine Arts degree from Colorado State University, in 1978, and a Master of Arts degree from the University of Montana, in 1987. He worked as a potter for a number of years, making wood-fired vessels covered with bas-relief carving. In 1995, he began painting full-time.



Sheila Miles

Santa Fe, NM

www.artistmiles.com

Catalog #S20

Estimate: \$350-\$425

Owl

2010

Oil Pastel

14 X 11"

"My work is a recording of my life experience that includes current news events, relationships, folk tales, animals, weather, landscape, the psychological, emotional, visual and intellectual world. My work can be serious, whimsical, real or imagined. These ideas are manifest in serious or whimsical moods in portraits, narratives and the iconic, ironic or dream-like imagery."—Sheila Miles

Sheila Miles earned a Bachelor of Arts degree, a Master of Arts degree in Painting and a Master of Arts degree in Drawing from Purdue University, Indiana. She is a full-time artist who works as an artist in schools and museums. She has exhibited throughout the region and is the recipient of numerous awards including the Gottlieb Foundation Fellowship for painting and the Montana Arts Council Individual Fellowship Award. She is included in numerous private collections and public collections such as the Yellowstone Art Museum, Billings, Montana; Federal Reserve Bank, Minneapolis, Minnesota; and the Missoula Art Museum, Montana.



Dale Marie Muller
Red Lodge, MT
www.dalemariemuller.com

Catalog #S21 **Estimate: \$750-\$900**
Moondog: Wolf
2007
Graphite
5 X 7"

"I've always been fascinated by the freedom, the mystery, the depth of self motivation of the artist. The ability to be in tune with nature, to be true to one's self and listen to the inner creative voice inspired me at an early age and has fueled my artwork ever since. In recent years, I have created a body of work, both oil paintings and graphite drawings, resonating with my deep respect for all wildlife."—Dale Marie Muller

Dale Marie Muller was born in New York and grew up in New Jersey. She studied at The University of the Arts in Philadelphia, Pennsylvania, where she earned a Bachelor of Fine Arts degree. In 1996, she moved to Montana. She is known primarily for her oil paintings and graphite drawings depicting wildlife.



S. Carlyle Smith
Great Falls, MT
www.scarlyle.com

Catalog #S22 **Estimate: \$500-\$600**
Giant Spring 2010
2010
Oil on Canvas
9 X 12"

"Muses bring about an emotion that energizes my paintings, sometimes happy, sometimes sad—nonetheless, a passion that imparts a magic that surpasses the conscious."—S. Carlyle Smith

S. Carlyle Smith was born in 1955 and raised in Utah. He moved to Montana where he has lived and painted for over 29 years. He is primarily self-taught but has also studied under Freeman Butts, Carolyn Anderson and Thomas English. He tributes much learning from his mentors Arlene Hooker Fay, David Katz, W. Steve Seltzer, Tom Gilleon, Ron Ukrainetz, Mimi Grant, Joe Halko and Ron Deloney. His work has been featured three times in *U. S. Art Magazine* including one "Editor's Choice"; twice in *Southwest Art Magazine*, including "Artist to Watch"; and once in *Classic Style Magazine*.

His works are held in private and corporate collections in the United States and abroad. He is represented by Coda Gallery in Palm Desert, California; Galerie Leo Coppi in Berlin, Germany; Xanadu Gallery in Scottsdale, Arizona; Tansey Gallery in Tucson, Arizona; Dana Gallery in Missoula, Montana; and Samarah Fine Art in Whitefish, Montana.



Kate Spencer
Brattleboro, VT
www.katespencerart.com

Catalog #S23 **Estimate: \$600-\$725**
It's All About Wheat
2010
Oil on Canvas
12 X 22"

"My artistic inclinations are a mirrored reflection of my life in Montana and New England. My heart is in Montana where the golden landscapes of my childhood are seared into my soul. My life is in New England where I have my music, my husband and my daughter. Painting reflects this dichotomy and when a subject chooses me, I paint, no matter where I am.

Born and raised in Great Falls, Montana, I spent many happy hours on the prairies searching for arrowheads and in the mountains playing pioneer, all the while absorbing the beauty of the landscape. I had excellent art training at Great Falls High School; but as with so many of its young, I left Montana and attended school in Boston. After many years of working at my store, Maple Leaf Music in Brattleboro, Vermont, and playing traditional music as my creative outlet, I returned to painting. Studying and taking workshops with local artists has helped me develop style and direction. I never lack for subjects and scenes!"—Kate Spencer



Julie A. Stevenson
Great Falls, MT

Catalog #S24 **Estimate: \$175-\$225**
The Carriage House
2010
Pastel on Paper, 18 x 12"
Full Donation of the Artist

"The carriage house borders my backyard. It is slowly falling down. I imagine it was quite grand in its day. You don't see many anymore, especially in town. I have recently started drawing again and thought I might document this building before it is gone. I am attracted to the colors—the green on green with shades of yellow popping out and the rust spots creating patterns all their own—and the textures of the panels used as siding in the design of the building. It would have made a great art studio. I wish I knew more of its history. The current neighbors are new and don't know much about the carriage house, so it is left to my imagination."—Julie A. Stevenson

Julie A. Stevenson was born and raised in Montana. After spending 13 years in Texas where she studied at Galveston College, she returned to Montana with her son in 1998 and earned her Art degree at the University of Great Falls in 2000. She is a former Curatorial Assistant/Registrar at The Square and has studied Information Technology.



Terry Thall
Great Falls, MT

Catalog #S25 Estimate: \$100-\$150
New England 2009
2009
Serigraph, Artist's Proof
Full Donation of the Artist

"This small serigraph is one of a number of small-format prints I have done in response to places I have visited. I have attempted to capture the essential qualities of the place without being 'photographic' in my depiction. The layering of the ink and looseness of the edges help me to convey the special atmosphere of this locale."—Terry Thall

Terry Thall was born in Columbus, Ohio and raised in the mid-west. She earned a Bachelor's degree in Sculpture from the University of Michigan in 1965. She spent three years in Boston and four years living in Milan, Italy and Crete. After meeting her husband in Crete, they moved to Montana. She received her Master's degree in Painting from Montana State University, Bozeman, in 1988. Terry taught K-12 Art in Massachusetts, Milan, Billings, and Great Falls. She taught at Montana State University, Billings, and the University of Great Falls. While employed by the Great Falls Public Schools, she served as supervisor of art as well as an elementary art teacher. Terry has served as a past trustee at The Square where she continues to volunteer her time as a docent.



Echo Ukrainetz
Great Falls, MT

Catalog #S26 Estimate: \$600-\$725
Broody Bunch
2010
Batik
16 X 16"

"With each new piece comes anticipation, excitement, and above all, education. All artists are perpetual students"—Echo Ukrainetz

Echo Ukrainetz is a Montana native who has taught Art, History and Spanish in the Great Falls area for many years. She has been working with batik for 16 years and enjoys experimenting with the many different aspects of the medium. Her batiks include a large variety of subject matter and are housed in numerous collections across North America.



Ron Ukrainetz
Great Falls, MT
www.ronukrainetz.com

Catalog #S27 Estimate: \$1,300-\$1,600
Morning at the Dock
2009
Plein Air Oil on Linen Board
16 X 12"

"Plein air painting is a sincere and true form of expression. Gathering just enough 'scenic information' on a surface to convey one moment in time should say more about the artist than the subject."—Ron Ukrainetz

Born and raised in Great Falls, Montana, Ron Ukrainetz is a life-long artist. During the past 25 plus years, working as a professional artist, he has garnered awards from numerous shows across the country. He has been featured in magazines such as *Wildlife Art News*, *The Artists Magazine*, *InformArt*, and *U.S. Art*. Ron works in acrylics on engraved Claybord® in the studio and in oil, both in the studio and en plein air. In 2006 and 2007, he was selected as one of 72 *Best of America* from the National Oil and Acrylics Painters Society. In May of 2007, Ron's work was selected for inclusion in the Society of Master Impressionists in Taos, New Mexico. In 2008, one of Ron's paintings placed in the Top 100 of the Paint America Competition. In July of 2009, two of Ron's paintings placed in the Top 100 Paint the Parks Competition. He is a member of Oil Painters of America and a founding member and past president of Montana Painter's Alliance.

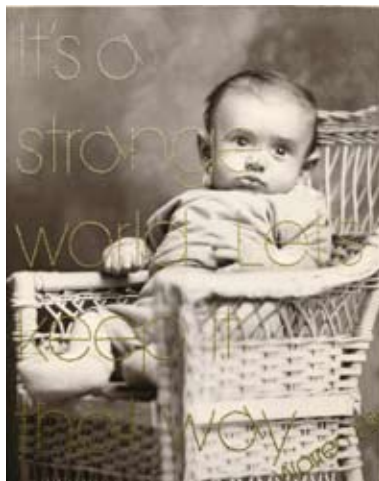


Shalene Valenzuela
Missoula, MT
www.shalene.com

Catalog #S28 Estimate: \$500-\$600
The Grind II
2007
Ceramic
4 X 10 X 4"

"My body of ceramic work consists of quirky pieces that reflect upon a variety of issues with a thoughtful, yet humorous and ironic tone. I am inspired by the potential of everyday common objects. I reproduce these objects primarily through slip casting, and illustrate the surfaces with a variety of hand painted and screen printed imagery. My narratives explore topics ranging from fairy tales, urban mythologies, consumer culture, societal expectations, etiquette and coming-of-age issues."—Shalene Valenzuela

Shalene Valenzuela was born and grew up in Santa Barbara, California. She received a Bachelor of Arts degree in Art Practice at the University of California at Berkeley, and a Master of Fine Arts degree in Ceramics from California College of Arts and Crafts. In June 2007, she moved from her longtime home of Oakland, California to begin a two year residency at The Clay Studio of Missoula. She spent the 2009/10 academic year teaching at Oregon College of Arts and Crafts and recently returned to Missoula. Shalene has participated in numerous artist residencies in Montana and California and has shown her work nationally in numerous exhibitions.



Jane Waggoner Deschner
Billings, MT

Catalog #S29 **Estimate: \$250-\$300**
From the Maxim Series
(*Ellis, strange world*)
2010
Found Studio Photo and Cotton Thread
(DMC Mouline'), 10 X 8"

"The vernacular photographs I re-purpose come from our shared cultural history. Embroidering quotes into them allows me to moralize. Everyone took the same kinds of photographs. It's not difficult to 'see' ourselves—even in photos of people, places and times we never knew. When I alter a photograph, the viewer is invited to 'deduce, speculate and fantasize.'"—Jane Waggoner-Deschner

Jane Waggoner Deschner was born in Pennsylvania, grew up in Kansas and moved to Billings, Montana, over thirty years ago. She earned a Bachelor of Arts degree in Geography from the Kansas City Art Institute, Kansas City Missouri, in 1969; a Master of Arts degree in Geography from the University of Kansas, Lawrence, Kansas, in 1974; a Bachelor of Arts degree in Art from Montana State University, Billings, in 1987; and a Master of Fine Arts degree in Visual Art from Vermont College of Fine Arts, Montpelier, in 2002. She has exhibited her work throughout the region and serves as a member of the Montana Arts Council.



Shirle Wempner
Big Timber, MT

Catalog #S30 **Estimate: \$600-\$725**
The Red Mask
2010
Oil on Canvas
14 X 11"

Shirle Wempner is a Montana native who was raised on a horse ranch on the outskirts of Billings. Her childhood experiences on horseback and exploring the valleys and foothills or her home ranch became the backdrop to her passionate interest in nature. Developing a strong desire to visually express on canvas that which so moved her, Shirle expanded her artistic education at Montana State University and through various workshops from her favorite artists. Working predominately in oils, Shirle continues to rediscover the creative process with each new painting. Shirle's preferred subjects are figurative and wildlife, with a mix of the energetic relationships between the two and the forces of nature.

Shirle has participated in 23 quick draw events in the last four years. She exhibits in several galleries around the state and her work is held in private collections. She is an award winning painter and a member of the Montana Painters Alliance, the Montana Professional Artists Association and the Sweet Grass Artist Alliance.

Paris Gibson Square Museum of Art is dedicated to fulfilling the artistic needs of the general public. This is accomplished through:

- Fostering accessibility and understanding of modern, contemporary and self-taught art;
- Collecting, preserving, exhibiting and interpreting art that actively engages a diverse and growing audience;
- Providing educational programming that inspires artistic expression and understanding;
- Expanding public knowledge of, interest in and support for the arts and artists of the region;
- Serving as a cultural center, and continuing the preservation of the historically significant Paris Gibson Square building.

Approved April 29, 2008 by the Board of Trustees

Museum Board of Trustees

- Ed Leppien, President
- Rebecca Bogden-Richards, Vice President
- Julie Easton, Secretary
- Michelle Klundt, Treasurer
- Suzan Seery, Member-at-Large
- Jennifer Pospisil, Past President
- Christina Barsky
- Jacque Finnicum
- Trina Knoche
- Bill Krieger
- Gavin McCluey
- Nano McCluskey
- Whitney Olson
- Timothy Seery
- Dennis Torgerson

Museum Staff

- Kathy Lear, Executive Director
- Kim Thiel-Schaaf, Director of Operations and Grant Development
- Bob Durden, Curator of Art
- Corey Gross, Registrar
- Rachel Kaiser, Interim Curator of Education
- Kelly Paladino, Circle of Friends Development Director
- Cori Mader, Facilities Supervisor
- Aaron Kueffler, Circle of Friends Development Coordinator
- Gail Gardiner, Daytime Receptionist
- Toni Abbas, Evening/Weekend Receptionist
- Brandy Deshner, Evening/Weekend Receptionist
- Kristen Bernard, Evening/Weekend Receptionist
- Aschle' Paladino, Volunteer Receptionist
- Kathey Hodges, Volunteer Events Coordinator
- Liz Olson, Volunteer Events Coordinator

1400 First Avenue North
Great Falls, MT 59401
406.727.8255
www.the-square.org
info@the-square.org

Museum Hours:
Monday through Friday, 10 am to 5 pm.
Tuesday Evenings, 7 to 9 pm.
Saturday - Noon to 5 pm.
CLOSED SUNDAYS





Paris Gibson Square
MUSEUM OF ART